

## DAILY EXPO NEWS DAY 1 13 SEPTEMBER 2017

### Graphix Supply World Launching Mimaki TS 30-1300

Designed specifically with ease of use and versatility in mind, the Mimaki TS30-1300 is a simple, entry-level sublimation transfer printer equipped with a carefully selected set of features that allows users to bring high-mix, low-volume print productions in-house. Sublimation transfer printing is widely used for textile and sportswear applications due to the elasticity and quick-drying capability of polyester material and in the growing market for soft signage applications, such as flags, retail in-store banners and tapestries.

#### The TS30-1300 delivers:

- Easy-to-operate entry model that can be used with ease.
- 4-colour inkset offers a printing speed of up to 19.6sqm/h.
- Sublimation transfer printer enhances product presentation ability.
- Mimaki Bulk Ink System and large volume ink packs.
- Uninterrupted Ink Supply System.

[www.gsw.co.za](http://www.gsw.co.za)



### Philips Lighting South Africa Signs Up As Platinum Sponsor Of Africa LED Expo



Philips Lighting is showcasing its advanced colour kinetics lighting system, which enables the same luminaire to provide high-quality intelligent colour and white light, as well as its cost effective Telemanagement lighting system, Amplight. Also on display is SportsStar LED, which is an innovative, LED-based luminaire that meets the challenges of both area as well as sports lighting. Visitors can head to the prominent Philips stand in hall 2 (C49). Philips has been revolutionising lighting for over 125 years. They pioneered the world changing development of electric light and LED, and are now leading the way in intelligent lighting systems.

'Our lighting innovations empower our customers to provide safe, power-efficient residential lighting that helps beautify cities, delivers great lighting experiences at entertainment destinations, as well as the right level of lighting to keep employees as productive as possible,' said Reggie Nxumalo, General Manager of Philips Lighting, Southern Africa. 'At this year's Africa LED Expo, visitors will be able to experience our latest innovations and discover how these will unlock value for their businesses and enrich their lives.'

'We are excited to have a leading brand such as Philips Lighting as our Platinum Sponsor for the next two years. The Africa LED expo has been gaining traction in the industry and is the leading showcase for LED lighting solutions on this continent,' said Africa LED Expo organiser Dyelan Copeland.

[www.lighting.philips.co.za](http://www.lighting.philips.co.za)

### Konica Minolta South Africa Launching AccurioPress C6100



The series of colour production printers are designed to support a highly responsive print room environment. The fast and flexible series has been created for operations who recently started digital printing and are now expanding their service as well as those who need to handle large, repeat, print volumes.

With the Integrated Colour Care Unit, the press overcomes some of the biggest pain points in digital print production such as time-consuming

front to back registration, extensive colour set-up and complex paper set-up operations.

Uptime is assured via highly automated features such as automated colour adjustment, skill-less operation, constant control of gradation and front-to-back registration. Enhanced functions, including stabilised paper feeding, support a wide range of paper weights from 52 gsm to 400 gsm, plus embossed paper, encouraging broader production possibilities. Other enhancements include low-cost envelope printing, via a dedicated fusing unit – all of these features targeted at growing printers' businesses.

Reliability and stability is further enabled by Simitri HD E toner for higher offset-like natural textures while lower temperature fusing reduces damage to paper, resulting in higher quality finishes and improved environmental performance.

[www.kmsa.com](http://www.kmsa.com)

### Enter The Johannesburg Speed Wrap Competition

The challenge will take place daily in Hall 3 and contestants will race against the clock to wrap elements to the best standards.

The Speed Wrap is a thrilling, live wrapping competition. The event is brought to you by platinum sponsor Roland, expo sponsors FESPA Africa and Sign Africa, vinyl sponsors Grafiwrap



(distributed by Maizey Plastics) and Ri-wrap  
(distributed by Red Hot Media).

#### PRIZES:

W-ookie (Wrap Rookie):  
First R3500.  
Second: R1750.  
Third: R1000.



#### DOUBLE:

Wrap Lord (Professional Wrapper): score more than  
45 points and double your money.

#### BONUS:

The Wrap King (Winner Bonus): winner gets to

compete in the World Wrap Masters at FESPA  
Berlin 2018.

The Speed Wrap will take place on the hour.  
The first round will be at 10am each day of the  
expo (13-15 September). On the 13th and 14th  
of September, the last round will be at 4pm. For  
the grand finale, the final round will take place at  
15h30 on the 15th of September.

Enter at the Speed Wrap stand, Hall 3, D116

Sponsored by:



## Colorscreen Launching Brother GTX Printer



The next generation of the Brother DTG digital  
direct-to-garment printers, the GTX, launched  
worldwide on 1 September, is being exhibited for  
the first time in Africa.

The GTX print heads, developed by Brother,  
contain many more nozzles than its previous print  
heads. This allows for prints at 1200 x 1200 dpi in a  
single pass, resulting in high quality prints at mass  
production level speed. This makes the Brother  
GTX printer two to three times faster than the  
previous model GT-381.

The GTX's new design stacks the white print head  
behind the CMYK, so when the platen comes out,  
the design is fully printed. The print driver can be  
set to pause for a specified length of time between  
the laydown of the white underbase and colours.

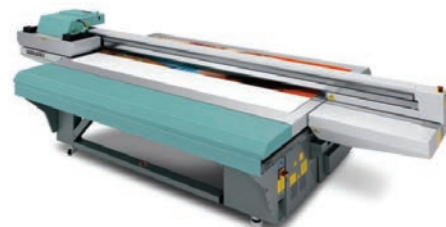
This allows for the printing of traditionally difficult  
fabrics that absorb more ink.

The user will experience less maintenance and  
downtime due to nozzles clogging with the new  
white ink circulation system, which keeps the  
white ink in suspension, and wet capping station  
that helps eliminate the ink from drying on the  
bottom of the nozzle plate.

With Graphics Lab, new proprietary printing  
software that comes free of charge with the GTX,  
the user will be able to import artwork, add text,  
rotate/size/position elements and apply artistic  
effects. Both Graphics Lab and the GTX print driver  
are available for Mac and PC operating systems.

[www.colorsreen.co.za](http://www.colorsreen.co.za)

## Fujifilm SA Launching Acuity 15 Flatbed Printer



**AFRICA FIRST**

This UV flatbed printer matches the renowned  
high quality produced by Fujifilm's Acuity Select  
20 and 30 series, but at a lower investment cost.  
Designed for light production, the Acuity 15 offers  
near-photographic image quality and print speeds  
of up to 23 square metres per hour. Much like the  
Acuity 20 and 30 series, it boasts a robust platform  
that can print on rigid and flexible media up to  
50.8mm thick. The vacuum system also reduces  
the need for masking, making it easy to load the  
media onto the bed.

The cost and specifications of the new Acuity  
15 printer make it a very suitable, high-quality  
introductory model to meet the low volume and  
light production needs of commercial, graphic  
display and industrial printers. However, larger  
print service providers can also take advantage of  
the printer, to offer proofs or show sample pieces  
to customers, freeing up capacity on their larger  
flatbed machines.

Tudor Morgan, Segment Manager Sign and  
Display at Fujifilm Graphic Systems Europe, said,  
'With the Acuity 15, Fujifilm is delighted to bring  
the benefits of its Acuity flatbed range to a much  
broader range of print service providers. Able to  
produce the same quality as our Select 20 and 30  
ranges, the Acuity 15 provides a great investment  
opportunity for any print business looking to  
diversify. Whether for a full print job, a proof or  
even as a way to get into printing thermoformed  
objects, it gives small and large print businesses  
alike the chance to offer their customers stunning,  
rigid and flexible prints on almost any surface.'

[www.fujifilm.co.za](http://www.fujifilm.co.za)

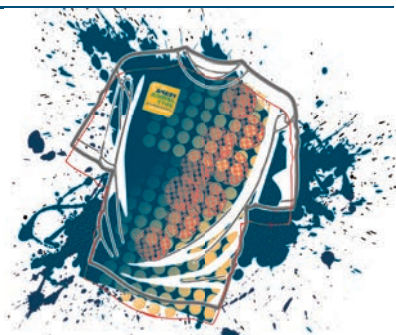
## T-shirt & Bag Printing Workshops

13, 14 & 15 September, hall 1, 9am-5pm, daily.

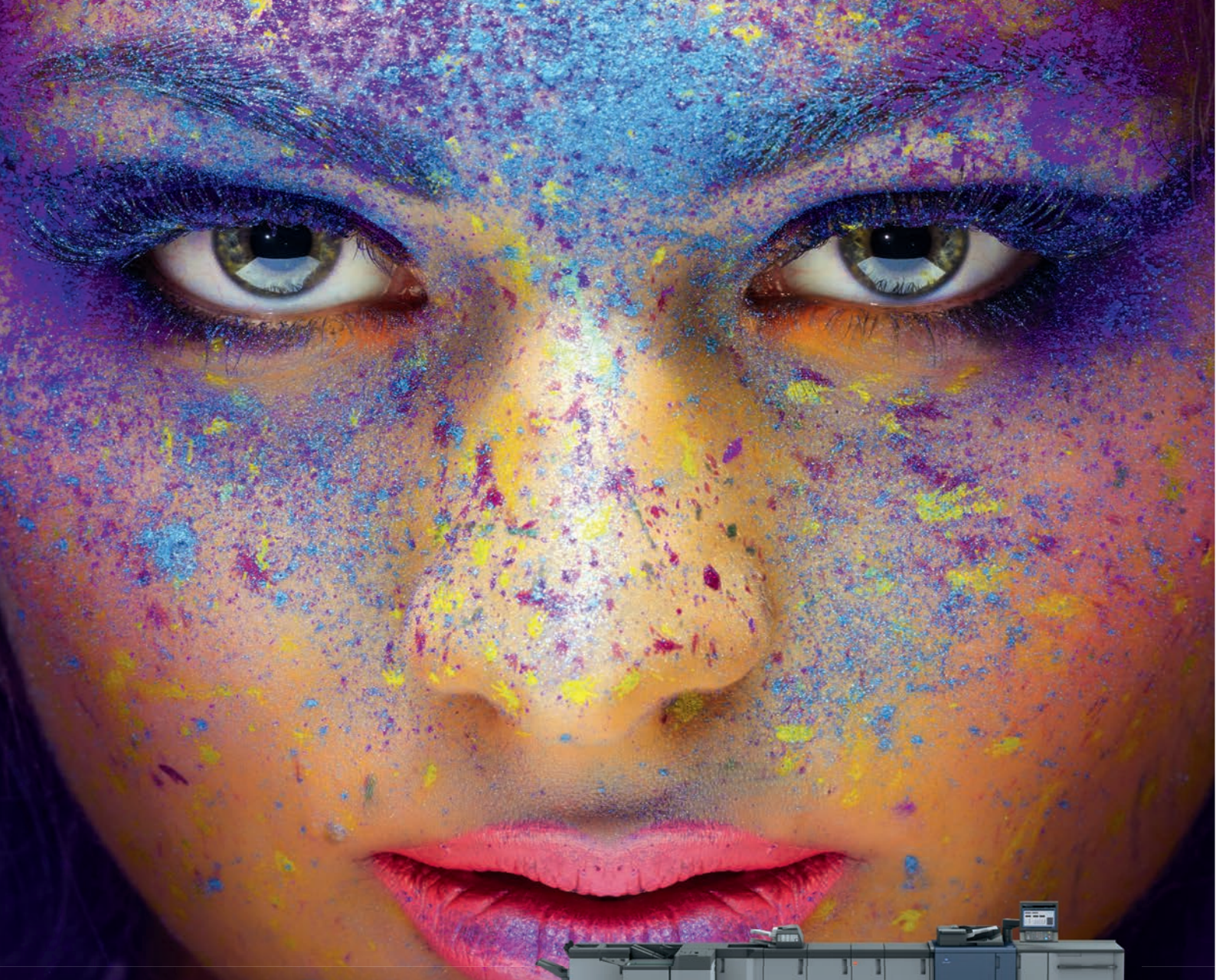
**HALL 01**

Enjoy free demonstrations by local experts on T-shirts and bags with speciality printing techniques, direct  
to transfer and screen printing. Pop into hall 1 and get tips and tricks. Ask our local experts questions.

**STAND C26**





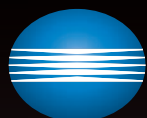


# Experience a new world of colour print

## The Accurio PRESS C2060/C2070

Konica Minolta's new Accurio PRESS C2060/C2070 production solutions not only gives you great productivity and reliability – it also helps you create new printing services through its ability to produce a wide range of print products catering for all your needs. With impressive colour reproduction over a wider gamut, a performance at the top of its class, and the efficiency of a wide selection of inline finishers.

[www.konicaminoltasa.com](http://www.konicaminoltasa.com)



KONICA MINOLTA

**AccurioPress**  
C2060/C2070

**PRODUCTION PRINT  
SOLUTIONS**

Printed on 115gsm  **GalerieArt** Silk | Paper supplied by



[www.papercor.co.za](http://www.papercor.co.za)



## Rexx Screen And Digital Supplies Premiering Kornit Storm Hexa R Series



**AFRICA FIRST**

Launched for the first time in the Southern Hemisphere is the Kornit Storm Hexa R series paired with the Chiossi e Cavazutti Dual Plus 1200 return belt dryer. The Kornit Storm Hexa R series features an eco-friendly process and biodegradable ink that complies with the strictest industry standards. The series guarantees accelerated print speed, industrial digital textile printing technology and the affordability of the Storm platform. It is the perfect choice for small-to-medium

businesses looking to scale up in full colour while keeping costs down.

Rexx Screen and Digital Supplies will install this waterless and environmentally-friendly technology at Vic Bay's Johannesburg branch immediately after the expo.

**Seen for the first time in Africa will be:**

Shockline's cutting edge laser transfer systems for CMYK and OKI White toner printers. These

transfer papers make it possible to custom print on cotton and natural, synthetic white or coloured fabrics, natural or artificial leather, wood, cardboard, cork, stiff materials such as metal, ceramics, Plexiglas and on a range of other applications (jigsaw puzzles, mouse pads, etc.)

Vastex premium quality manual screen printing carousels, flash dryers, curing tunnels and pre-press equipment. The range features modular and robust construction and superior accuracy.

MS Korea: the latest technology 3D polyurethane reflective transfer films for commercial and industrial applications.

RexxPlas: world class Phthalate free plastisol inks.

Magna Colours: Ultra Low Formaldehyde (ULF) eco-friendly water based discharge system.

[www.rexxscreendigital.co.za](http://www.rexxscreendigital.co.za)

## Hi Tech Business Systems Showcasing Smart Guillotine And Smart Binder



The Smart 460Z5 Electric Guillotine features an auto clamping system on both sides, light curtain safety, powerful inclined cutting system, optical cutting line, blade cutting depth adjustment, LCD display and different clamping pressures.

The Smart 976V7 High Speed Perfect Binder features a cabinet with better support, block thickness settings, three binding modes, counter and optional creasing unit.

[www.hitech1.co.za](http://www.hitech1.co.za)

## NSDS Exhibiting Screen Printing Solutions



### X-PRINT SCREEN CAROUSELS

In partnership with MS Engineering, NSDS now offers a range of micro register screen printing equipment, which allow the smaller printer to create high quality registered screen prints for a fraction of the cost of an automated machine. The X-Print machines come with X,Y and Z registration for exacting accuracy. Adjustment is completely tool-less.

### TORRID FLASH DRY UNITS

Complementing the print carousel are the torrid flash units, which combine instant IR heat with active

air flow. The benefit of the Torrid flash is two-fold. Firstly, solvent based inks on ABS, vinyl, Correx and other substrates can be flashed in seconds, allowing multi-coloured prints, which weren't possible before without racking and air drying.

Secondly, as the unit works on IR lamps, it is only on when flashing, saving on energy costs, and also not causing excessive heat in the vicinity of printing, as is the case with more conventional 'always on' flash units.

[www.nsd.co.za](http://www.nsd.co.za)

## Graphix Supply World Launching Aristo 1625 SL



Aristo precision cutters have for decades been a success in many industrial fields in the processing of different materials.

Michael Hock, CSO ARISTO, commented on the company's renewed partnership with Graphix Supply World. 'ARISTO decided that a refreshed partnership is the right direction for the future of the brand in South Africa,' he said. 'GSW and ARISTO have a long history together with a lot of machines installed in the past. Now we want to approach the market again with the full range of ARISTO products. Small machines

from 1300mm x 1000mm up to our largest LFC series (5200mm x 7200mm) will be available and supported again through GSW.'

Whether films, reflective vinyls, traffic and advertising signs, foam plastics, laminates, technical fabrics, paperboard, wood, hardboards, non-ferrous metals or others, Aristomat Series SL cutters offer the optimal solution for the user's cutting application, with their multitude of custom-designed tool heads and tools.

[www.gsw.co.za](http://www.gsw.co.za)

## Clear Solutions Showcasing Homer HM1800P

The machine can print up to eight colours, and features a maximum printing width of 1.8m, with two Kyocera heads, and a normal production speed of 120sqm per hour.

Mainly applicable for textile printing (primarily for printing on polyester), and suitable for sublimation ink solutions, the machine is cost effective and meets production requirements.

The machine has a very robust build with the ability to handle 200kg rolls and can run unattended for a long period of time. Ink colours include CMYK, orange, blue, fluorescent pink and fluorescent yellow.

[www.clearsol.co.za](http://www.clearsol.co.za)



## Trisave Exhibiting Dumor 331 BSC Card Cutting Machine



The Dumor 331 BSC functions as a versatile slitter, cutter, creaser or perforator for digital printers, with a wide range of applications such as business cards, greeting cards, raffle tickets, leaflets, brochures and more.

The air suction feeder has a capacity of 50mm and the creasing tool can be interchanged with a perforating tool.

This addition to the company's existing range of entry level and table top card cutters is suitable for larger digital printer or copy shops.

[www.trisave.co.za](http://www.trisave.co.za)

## First Asset Finance Providing Consultation On Equipment Purchase



First Asset Finance

Changes and regulations in the banking industry throughout the world have made it more difficult for small to medium sized businesses to gain access to capital to fund their businesses. In order for businesses to have an edge in the global market, they need to invest in technology and equipment.

Niche operator finance companies such as FAF have entered into these markets and provide the necessary skills and ability to lend to small and medium sized business in South Africa. FAF have a genuine understanding of the industries in which they operate, customers' needs and the latest trends in business. Core to having this capability is that they align themselves with quality suppliers of equipment and work together with them so that they remain close to the source of innovation and updated technology.

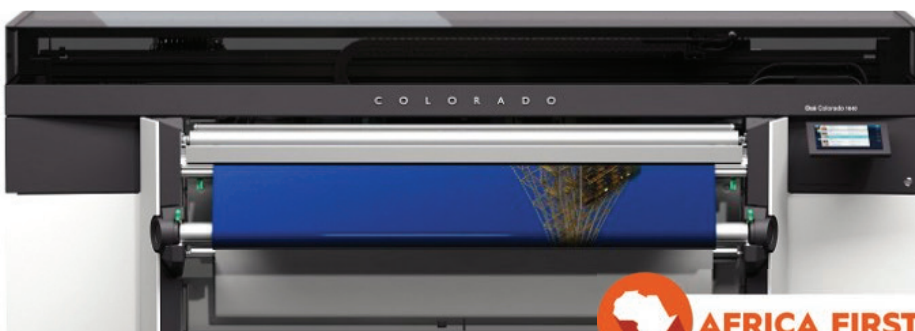
FAF makes the credit application process simple for both customers and suppliers. Its skilled sales representatives service both customers and suppliers countrywide and offer a personal touch to the otherwise faceless finance industry of today.

The company provides operating rentals, rent to own, installment sales and secured medium term loans, innovative payment structures, tax efficient structures, off balance sheet lending, cash flow improvement, the opening up of additional credit lines, personalised service, fast turnaround times and national coverage.

[www.canon.co.za](http://www.canon.co.za)

[www.faf.co.za](http://www.faf.co.za)

## Canon South Africa Launching Océ Colorado 1640



**AFRICA FIRST**

This is the first 162.5cm (64 inch) roll-to-roll wide format printer built on new Canon UVgel technology. UVgel technology has been developed to deliver unprecedented productivity, matched with output quality on a broad range of media for optimum application versatility.

Working with the attributes of UVgel, the Océ Colorado 1640 has been engineered to high industrial standards to meet the peak production requirements of businesses of all sizes, producing

high volumes of wide format graphics within the short turnaround times demanded by clients. With a top speed of 159sqm/hr for applications such as billboards or outdoor banners, the printer offers print service providers an unprecedented level of productivity. Even at the highest level of quality for close-up indoor applications, the printer operates at a speed of 40sqm/hr.



## Wired4Signs Showcasing Signage Innovations And Materials

### LED STRIPS

The company has built up one of the largest selections of LED strip lighting for the retail, architectural, residential and commercial industries over the past 14 years. Its LED strip lights are manufactured to meet international standards by the company's trusted suppliers from all over the world. All of the products are sold with a minimum three year warranty.

### LED MODULES

LED Modules are Wired4Signs' full-proof solution for many applications but mainly built for the signage industry. Whether it is billboards, lightboxes, fabricated letters, vacuum formed signs or retail applications, the products give optimal illumination at the lowest cost with the best power consumption and longest lifespan.

### ALUMINIUM PROFILES

The company offers over 48 unique types of LED lighting profiles. This range continues to grow by almost 10 new types each year. LED strips, modules or bars are mounted inside the aluminium channel with a clip-on cover/diffuser, endcaps, clips and even suspension kits, which together have the potential to form a complete luminaire. The aluminium provides a heat sink, essential to ensure the performance and longevity of high-powered LED lighting. Together with the cover, they provide impact and dust protection as well as amazing aesthetics.

### AB200

This is a clear two part glue that is renowned for its versatility and can bond a wide variety of substrates to plastic, without the need for



surface primers or conditioners. Typical examples of applications include bonding polycarbonate letters in the sign industry, repairing polycarbonate headlights, bonding outdoor lighting lenses and fixtures and assembling electric metre housings and covers.

[www.wired4signs.co.za](http://www.wired4signs.co.za)

## Sign-Tronic Launching Obelisk Foam Plotter



The Obelisk Foam Plotter makes it easy to produce 3D Styrofoam illuminated letters, signage and decorative elements. The plotter is a cost-effective and compact foam cutter capable of cutting styrofoam with no smoke, smell or noise. A professional, easy to operate machine with a footprint of less than a square metre when in operation, the Obelisk is capable of a maximum foam sheet size of 1250 x 600mm and thicknesses up to 100mm.

Because cutting with the Obelisk is so effective, the cutting surfaces are smooth and free of any jagged edges. Ultralight and cost effective, XPS or EPS Polystyrene foam does not absorb water and is easy to finish using water-based or acrylic paint. Other types of paint can be applied over a water-based primer for unlimited creativity. Applications include: signage, illuminated letters,

logos, architectural shapes, hobby, craft and toys, retail décor, packaging and more.

The plotter is supplied with intuitive Stella Obelisk software that allows importing of objects from Adobe Illustrator or CorelDRAW. Alternatively, users can create cut files directly in Stella-Obelisk then simply combine objects in a single-lined project that is then ready to be cut on the plotter. By using the 'Auto' button, the software generates all the necessary lines and paths, making foam plotting as easy as printing. Users will be in production after just a couple of hours of training.

Sign-Tronic will run live demonstrations on the Obelisk on their stand in Hall 3 at the event and during the Business Opportunity Programme:

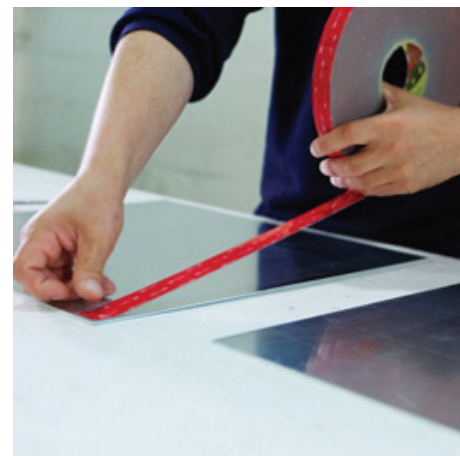
[www.sign-tronic.co.za](http://www.sign-tronic.co.za)

## 3M Launching VHB Tape GPH Series

The VHB Tape GPH series is a permanent bonding solution that can replace traditional mechanical fasteners and liquid adhesives in challenging, high temperature applications. It uses a conformable, acrylic foam core to provide a good balance of strength and conformability.

The new series helps break the barriers of traditional construction elements. It adheres instantly with high initial tack on a broad range of substrates like: metal, glass, ABS plastics, rigid PVC, and polycarbonate. Application possibilities are almost endless, and users can design projects with total freedom.

The series has excellent temperature resistance and works under severe conditions. It combines high temperature resistance, and multi material bonding. Its strong bond to metals, combined with a short term temperature resistance of up to +230 degrees Celsius, make it ideal for permanent bonding even in tough high temperature applications like powder coat or liquid painting.



[www.3M.co.za](http://www.3M.co.za)

## Kolok Graphic Supplies Exhibiting Range Of NUtec Inks



### The ink range includes:

**Aquamarine AQ10 DS2 Ink** (dye sublimation): designed for coated and uncoated transfer paper, as well as direct printing of polyester based textile and polyester coated rigid surfaces.

**Emerald E12 MS21 ESM Ink**: an Environment Responsible Product (ERP) designed for optimum use in Epson DX4 and DX6 print heads.

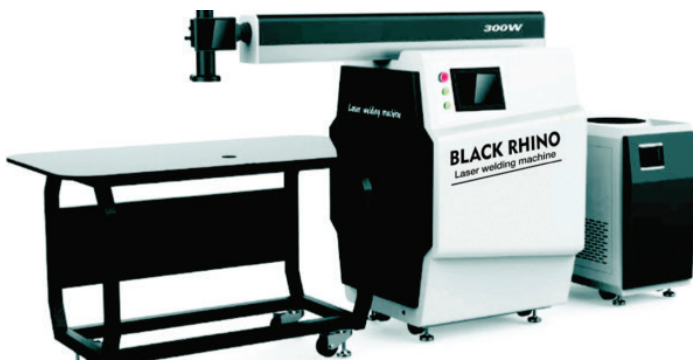
**Topaz T35 SK-LS Solvent Ink** (for grand format printers): ideal for reliable and efficient high speed

printing. It is optimised for use in Seiko SPT 35pl and performs well on a range of other print heads including Spectra Polaris and Konica Minolta.

**Granite G60-F Ink** (for grand format printers): a general purpose solvent ink available in five litre bottles for optimum use in Spectra 30pl, 50pl and 80pl print head machines. The ink offers good press stability, ensuring reliable printing with low maintenance.

[www.kolokgs.co.za](http://www.kolokgs.co.za)

## Exion Corporation Introducing Black Rhino Laser Welding Machine



The new Black Rhino 300W laser welding machine is renowned for its precision, and can weld very small and intricate type faces and logos at high speed. The finished product has no chromatic abrasions or any trace after welding. Once the machine welds together the return and face, the user can create a halo effect or backlit channel letter with a quality finish that is flawless in design.

The laser machine is aimed at the signage industry, with the ability to produce beautiful and unique channel letters with ease. There is no

need for extra training and the machine can be set up within an hour, allowing the user to start right away. The machine boasts a rotation of 360 degrees, making it very easy to get into any space, turn or bend with a clear welding result. No burn marks are visible on the face, so no surface treatment or polishing is required afterwards. No consumables are needed. The recommended materials for welding are stainless steel and mild steel.

[www.exion.co.za](http://www.exion.co.za)



**HALL 01**  
**STAND B21**

## Corel Workshops

The Corel workshops are brought to you, courtesy of Corel Corporation and DDS (the Authorised Corel distributor for Africa) together with Gencotech (Corel Value Added reseller).

Attend any of the Corel workshops (CorelDraw and/or Paintshop Pro) and enter the daily lucky draw, to win a full working package of CorelDraw Graphics Suite 2017. One lucky winner will walk off with a grand prize which includes: CorelDraw Graphics suite 2017, a Wacom drawing tablet and a Lacie Porsche designed mobile hard drive designed by the Legendary Ferdinand Porsche himself.

## WIN WITH Corel



The workshops are being hosted by industry specialist Mo Jogie, covering top tips for graphics professionals. Jogie has studied fine art and graphic design. He has worked on numerous international brands. He is head creative juicer at MSD and is also principal of Mzansi Creative Foundation. A design activist, he is an admin on AIGAfrica – a collaboration with AIGA New York and South African graphic designers. He has served as Vice President of Icograda and served on the boards Think, DSA and Cafe. He is a member of the International Society of Typographic Designers and the London City and Guilds.

The workshops are open to all visitors without reservation or cost. They will be a presentation style demo, no laptops needed. Active audience participation is welcome.

### WED 13 SEPTEMBER

**10am-10h45am** – The all new CorelDRAW Graphics Suite 2017.

**11:00am** – Preparing your artwork correctly for Laser cutting with CorelDRAW and Wacom – Live demo, Gencotech/DDS Stand, Hall 1.

**13:00** – The all new Corel Paintshop Pro 2018 Ultimate.

[www.signafricaexpo.com](http://www.signafricaexpo.com)



## 3A Composites Launching New Products

**DISPA:** the new paper board has a unique structure of embossed formed paper that gives it exceptional strength and rigidity.

**CRYLUX:** acrylic glass is the perfect choice when it comes to looks because of its high transparency, resistance and UV stability. CRYLUX is one of the optically strongest plastic sheets in this group.

Manufactured from cast polymethyl methacrylate (PMMA), it is versatile and can be used for company signs, shop fittings, individual items of furniture and in the building industry. The product provides transparency for displays and lively, intense colours for visual communication. It also encourages the attractive expression of form because it is easy to work with using most techniques.

**CRYLON:** these are large format acrylic glass sheets with brilliant clarity, good optical characteristics and outstanding colour reproduction, and comes in various transparencies. CRYLON can be shaped and is suitable for both indoor and outdoor use.

[www.display.3Acomposites.com](http://www.display.3Acomposites.com)



## Business Opportunities In Print, Sign & LED Lighting

See the following business opportunities showcased on exhibitor stands at the upcoming Sign Africa, FESPA Africa, Africa Print and Africa LED exhibitions. Opportunities for small start-ups or those looking to grow their businesses will be showcased in these daily 20 minute sessions. There is no charge, just go to the stand.



### WED 13 SEPTEMBER

**09H00:** Falcon – hall 3: Add wall paper & interior decorating floor tiles to your business.

**09H30:** Mimaki – hall 3: Dye Sublimation / Pigment printing – Textile, Garments, decorative, interior applications

**10H00:** Uprint – hall 1: The Start-up Opportunity for Hard & Soft Surface Printing

**10H30:** JG Electronics – hall 1: Start or expand your own T-shirt printing business.

**11H00:** Gencotech – hall 1: Preparing your artwork correctly for Laser cutting with CorelDRAW and Wacom – Live demo, Gencotech/DDS Stand.

**11H30:** Philips South Africa – hall 2: Lighting is a Variable Science

**12H00:** Industrial Inkjet Specialists – hall 2: Durst helping customers exploit new opportunities and create profitable business.

**12H30:** Graphix Supply World – hall 3: UV Flatbed printing & finishing – Point of Purchase and corporate branding.

**13H00:** Evonik Acrylics Africa – hall 3: Working with acrylics, demo's on bending and gluing.

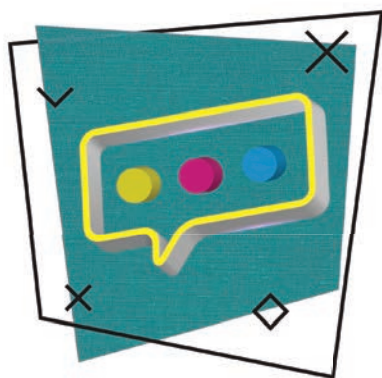
**13H30:** Sign-Tronic – hall 3: Plasticut, Obelix 3D signmaking & decoration system.

**14H00:** Graphix Supply World – hall 3: Industrial (mass volume) printing application (EFI) & finishing.

**14H30:** Maizey Plastics – hall 3: Poli-Tape T-shirt and textile decoration.

**15H00:** Midcomp – hall 3: Work smarter not harder – print less for more money!

## Technical Screen Print & Textile Talks



**REXX-T**  
Premium quality combed cotton garments

### 13-15 SEPTEMBER, Hall 1 Daily

Technical Screen Print and Textile Talks is a hands-on workshop, presented by Charlie Taublieb and Dr. Nicholas Hellmuth from FLAAR Reports. Sponsored by REXX Screen & Digital Supplies.

#### CHARLIE TAUBLIEB

Visit this hands-on workshop where printers can learn different techniques all taught by Charlie Taublieb. He has been in the screen printing industry since 1976, and heads up Taublieb Consulting in Greenwood Village, Colorado, a company specialising in technical screen printing consulting for textile printers.

#### DR. NICHOLAS HELLMUTH

Dr Nicholas Hellmuth is the founder, President, and Director of FLAAR. A Harvard graduate, Nicholas has spent many decades working in Latin America. He will be talking about the Growth of textile printing and the future opportunities that exist.

**HALL 01 STAND B21**

TIME	SPEAKER	TOPIC
11:00	Charlie Taublieb	Introduction To Screen Printing
12:00	Dr. Nicholas Hellmuth	Growth In Textile Printing & Future Opportunities
14:00	Charlie Taublieb	Special Effects In T-Shirt Screen Printing



# Mimaki

RENTAL OPTIONS AVAILABLE  
YOUR TRADE-IN COULD BE YOUR DEPOSIT!



## ONLY MIMAKI HAS ALL THE SOLUTIONS!

### SIJ-320UV

Super-wide format UV inkjet printer  
High speed printing on 1 or 2 rolls



### TX300P-1800B **NEW**

Hybrid, quality belt-fed, direct-to-textile printer for stretchable fabrics.



### CJV150-130/160

Affordable, high-spec, high performance, integrated printer/cutter

#### RENT OPTIONS

From  
**R4999/ pm\***  
Ts & Cs apply



### **NEW**

### UJF-3042MKII

High performance, state-of-the-art, small format UV printer



### JFX200-2531 **NEW**

Large flatbed UV-curable inkjet printer with a retained printing engine.



## CALL US NOW!

INT/24H: +27 (0)82 455 6333

CPT: +27 (0)21 511 5340

**marketing@gsw.co.za**

JHB: +27 (0)11 444 9288

DBN: +27 (0)31 502 6128

**www.gsw.co.za**

**GSW**  
Graphix Supply World  
**Mimaki** Exclusive Distributor

## QuestionS To Ask WHEN VISITING A SIGNAGE AND PRINTING EXPO



Expo's are an ideal opportunity to interact with industry experts about equipment and products you're investing in, or services you're considering adding to your business. Some of our exhibitors give a useful tool kit of questions visitors to the Sign Africa and FESPA Africa Expo, and any expo in general, should ask when investing in LED's, channel letter benders, laser engraving and screen printing.

### CHANNEL LETTER BENDING

#### EXION CORPORATION

##### IS THERE A MARKET FOR THIS APPLICATION?

Letter bending is quite a niche market, so you need to research if there is a need for this, both for new clients you're hoping to attract, and among your existing clients.

##### CAN THE MACHINE HANDLE THE TYPES OF MATERIALS YOU WANT TO BEND?

Know the requirements for the products you want to produce and ensure the machine can process these materials, as you don't want to be stuck with equipment that can't meet your needs. Our TPS machine bends and cuts stainless steel letters.

##### CAN THE SUPPLIER OFFER THE NECESSARY TRAINING?

Letter bending is all about learning the technique — once this is grasped, anyone can bend letters. Look for suppliers who can offer extensive training and reliable back up service.

##### DOES THE COMPANY SUPPLY LETTER BENDING MATERIALS AS WELL?

Look for a 'one-stop' shop that can supply the high quality and cost effective materials needed. This also saves you the time of trying to source suppliers and do the ordering of materials yourself.

### LED LIGHTING

#### WIRED4SIGNS

##### WHY CHOOSE LEDS?

LEDs have low power consumption, saving on the electric bill. LEDs only produce visible light within the light spectrum. LEDs have a long lifespan of 50,000 hours before degradation starts to appear. Less energy is converted to heat energy. LEDs are very versatile and can be used in a wide range of applications. LEDs can illuminate ideas, concepts and designs like no other light source. LEDs work on low voltage, which is safer to use. LEDs are easily controlled and programmed to create exciting or relaxing moods. High CRI LEDs can simulate natural sunlight, saving energy.

##### WHAT KINDS OF LEDS ARE AVAILABLE?

Waterproof LED modules for signage, LED tube lights, LED bulbs, colour changing LEDs, lensed LEDs for edge-lighting and backlighting, programmable LEDs, Neon look diffused LED strips and non-diffused LED strips.

##### WHERE WOULD I USE LEDS TO MY BENEFIT?

Street lighting, signage lightboxes and fabricated letters, commercial lighting of factories, warehouses, shopping centres, food, agriculture, residential lighting of homes and offices, billboard lighting with LED floodlights, spotlights or wall washers. Other uses are: emergency power lighting, solar power lighting, canopy lighting, low power devices, CCTV cameras, machinery, marine, aviation and automotive.

##### WHY SHOULD I BUY QUALITY LEDS?

Our 12 years' of experience in the industry has proven that quality matters. There are many LED suppliers but only a few supply well designed, high quality products and services. Higher quality reduces failure rate, and in turn reduces down time and maintenance costs. High quality LEDs produce high colour consistency, use less energy and produce more light. Quality products are designed to be more robust and can handle harsher environments. Lower quantities of quality LEDs can do the job, saving money and time.

### LASER ENGRAVING

#### TRODAT SOUTH AFRICA

##### What are the various applications possible with Laser engraving?

Laser engravers are generally used for cutting, marking and engraving. Laser systems are divided into two clear sources, namely CO2 and Fibre. The Signage industry mostly uses CO2 lasers for cutting applications. Depending on your needs and requirements, laser applications can range from signage, plastics, metal, wood and promotional products to digital printing.

##### How can laser engraving complement a signage business?

Quick and easy cutting of Perspex, acrylic and laminates to be used in signage. With branding being such a big part of the sign industry, laser engravers make complicated cut outs simple to achieve.

##### How long does it take to learn to use a laser engraver?

Laser engravers are easy to use. The most difficult part of the process is generating the artwork. A laser engraver is really just a printer. Usually laser operators can become proficient with two days worth of training.

##### Which features should one look for in a laser engraver?

Firstly, the quality of the design, construction and components used in manufacturing the laser are important. For example, a protected motion system means lower maintenance costs in the long run and Brushless Servo Motors result in crisper engraving and cutting quality. The laser source is the most important component. The Iradion, Ceramicore tube is the preferred choice with pure gas composition giving the longest lifetime of all tubes and it can be operated at much higher pressure, which results in higher speeds but lower energy consumption. Look for quality of the end product. Don't forget the software: it should be intuitive and easy to set up your jobs. Test a similar file on different machines to see which machine offers the best engraving and cutting quality. Make sure there are spares available locally with good technical support. We offer all of the above features.

### SCREEN PRINTING

#### NATIONAL SCREEN AND DIGITAL SUPPLIES

##### WHICH EQUIPMENT AND SUPPLIES ARE NEEDED?

A printing table or carousel, a heat curing solution such as a heat press, a flash dryer or small tunnel oven and exposure unit (optional). Ink options include water-based or Plastisol Textile printing inks, which are suitable for printing different types of fabrics or applications. Colours can be matched to Pantone references.

##### WHAT ARE THE POSSIBLE APPLICATIONS OTHER THAN T-SHIRT PRINTING?

One could offer printing of estate agents' Correx boards, safety signage such as exit and fire hydrant locators, and vinyl stickers for a number of applications. Machinery is easily adapted to print boxes, wooden crates, bags, metals, glass, ceramic and much more.

##### DOES THE SUPPLIER OFFER TRAINING?

Look for a supplier that will assist you in setting up, and offer ongoing training and support.

##### DOES THE SUPPLIER OFFER SCREEN PREPARING SERVICES?

NSDS is a turnkey supplier that offers products and services to include the full range of requirements of any screen printer. This includes screen fabrication in both mild steel and aluminium, screen re-stretching, screen exposing and even colour matching of inks to client specific Pantone colours.



# SIGNAFRICA & AFRICA PRINT

## ONLINE DIRECTORY

Find the right supplier with the right product

**QUICK & FAST**

- **BRANCHES**
- **VIDEOS**
- **PRODUCT BROCHURES**
- **SPECIALS**
- **FEATURED PRODUCTS**
- **PRODUCT OR COMPANY SEARCH**
- **KEYWORD SEARCH**
- **QUICK AND EASY**
- **MAPS**

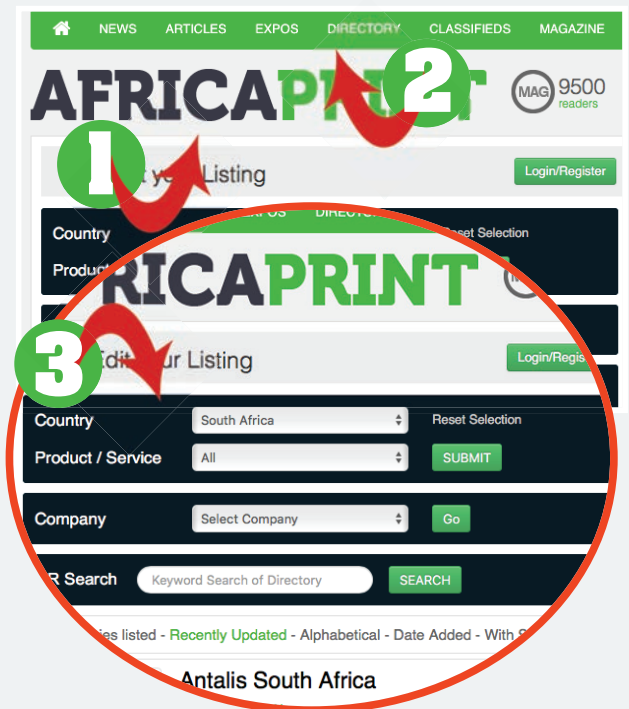


### Follow these easy steps:

- 1 Go to [www.SignAfrica.com](http://www.SignAfrica.com)
- 2 Click on the Directory tab (top bar)
- 3 Complete the search fields
- 4 Contact the companies that supply the products that you are looking for.

### Follow these easy steps:

- 1 Go to [www.AfricaPrint.com](http://www.AfricaPrint.com)
- 2 Click on the Directory tab (top bar)
- 3 Complete the search fields
- 4 Contact the companies that supply the products that you are looking for.



Follow us on twitter and **stay ahead** with daily industry news



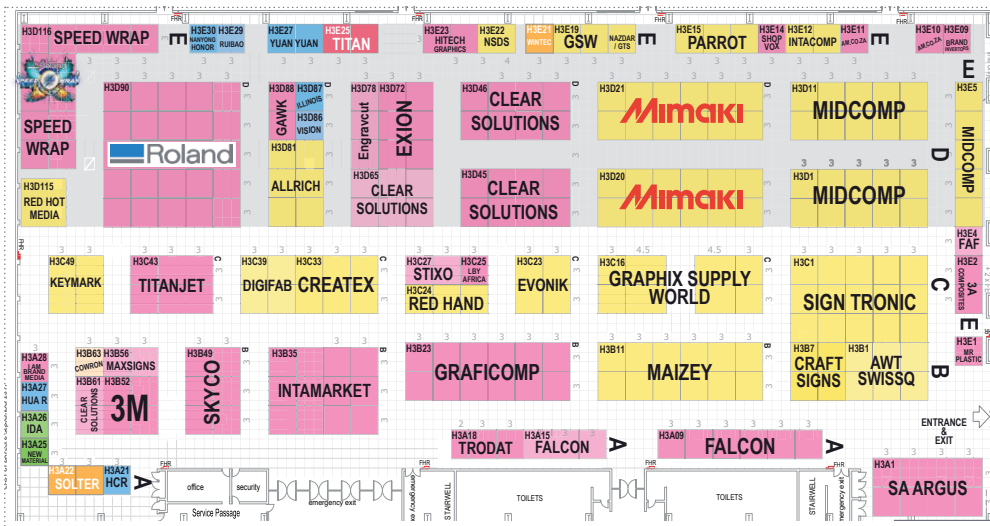
Join our **social community**

Like us on Facebook and **connect with** printing industry movers & shakers

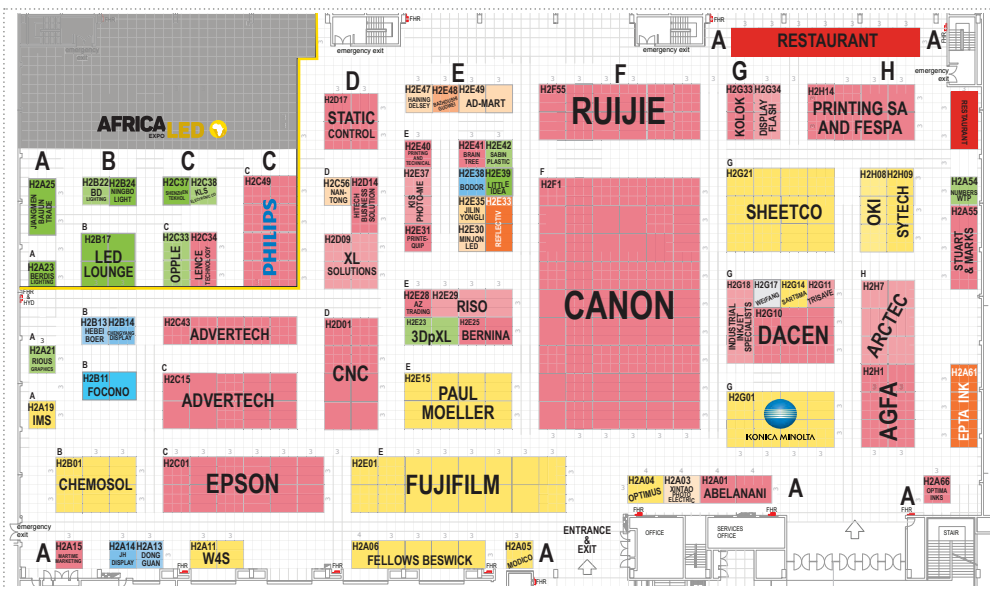


# VISIT ALL THREE HALLS:

## HALL 3



## HALL 2



## VISIT HALL 1 FOR:

SCREEN PRINTING,  
T-SHIRT PRINTING,  
GARMENT DECORATION,  
SIGNAGE SOLUTIONS,  
LED LIGHTING,  
DIGITAL SIGNAGE

## HALL 1



THE DAILY EXPO NEWS IS PRINTED  
BY KONICA MINOLTA SOUTH AFRICA

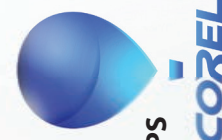


KONICA MINOLTA

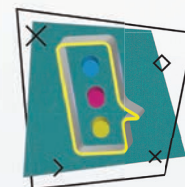
## HALL 03



T-SHIRT + BAG  
PRINTING WORKSHOPS



COREL  
WORKSHOPS



TECHNICAL  
SCREEN PRINT  
+ TEXTILE TALKS

REXX-T  
Premium quality cotton garments

## HALL 01

Sponsored by:



PUBLISHED BY: Practical Publishing SA (Pty) Ltd PO Box 8825, Edenglen, 1613 South Africa Tel: (+27 11) 450 1650 Fax: (+27 86) 565 8177 www.PracticalPublishing.co.za

